

**Early College High School Leadership Council
Meeting
February 14, 2023**

The Best Place to Start *and Finish!*



Agenda

- Welcome
- Overview and Updates
- Educate Texas — TEA Updates
- UTEP Updates
- School Spotlight
- Upcoming Events
- Next Meeting

Tonie Badillo

Tonie Badillo

Dr. Donna Ekal

Ivette Savina

Cotton Valley Early College at Fabens HS

Clint ISD Early College Academy

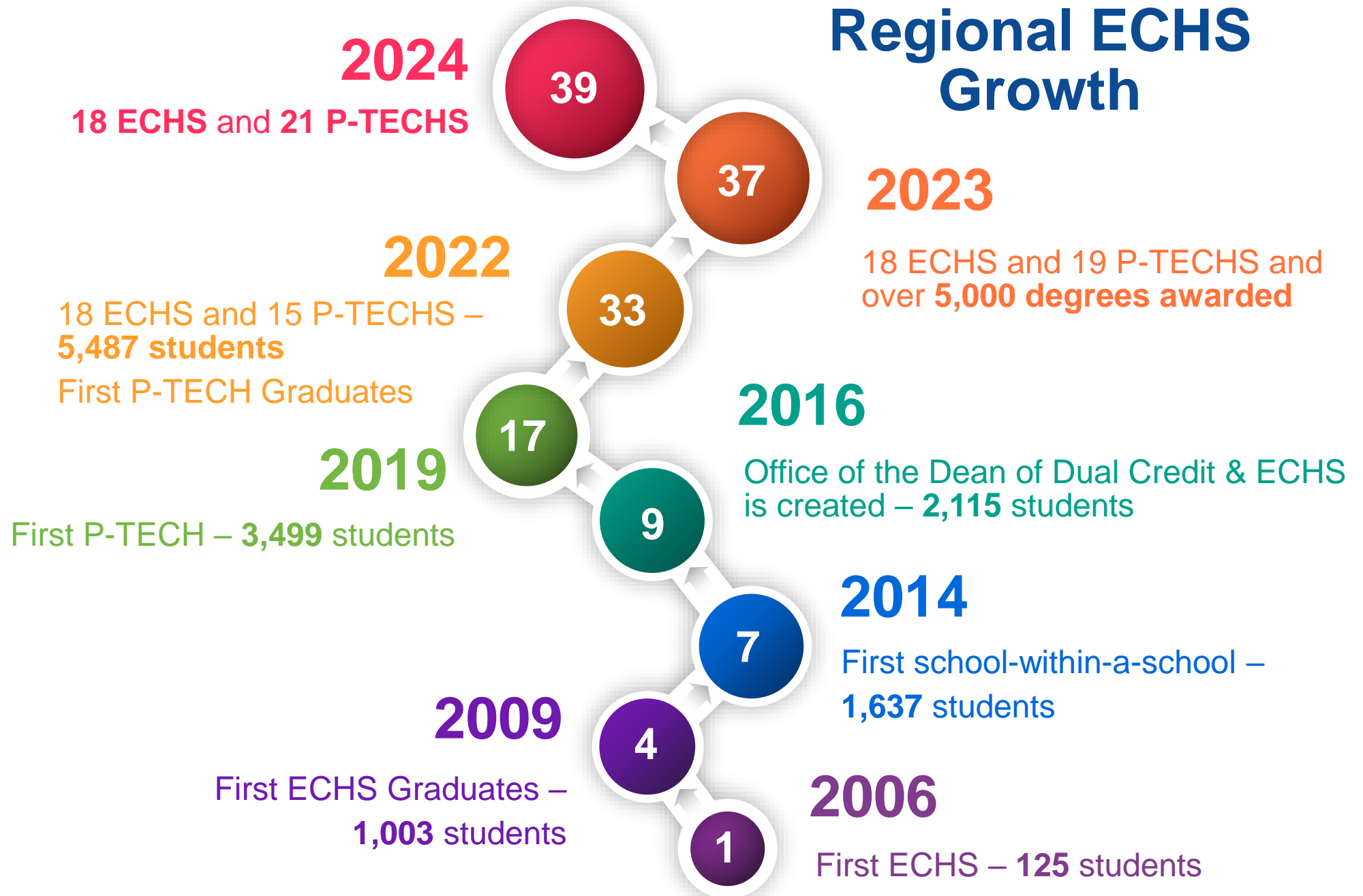
Tonie Badillo

Fall 2023



El Paso
Community
College

Regional ECHS Growth





Contact Us

www.epcc.edu/academics/dualcredit/early-college-high-school

El Paso Community College

Early College High School
EPCC > Academics > Dual Credit > Early College High School

Online Assistance Available [Get Connected](#)

Dual Credit
Expectations
Early College High School
Documents

The College and Career Readiness School Models (CCRS), including Early College High School (ECHS) and Pathways in Technology Early College High School (P-TECH), are designed to allow students to simultaneously earn a high school diploma and a post-secondary credential in four years. Students in this program take a combination of high school and college courses and receive academic and social support services to ensure their success, and it's free!

The ECHS and P-TECHS must target and enroll students who are historically underrepresented in higher education, including economically disadvantaged, first-generation, at-risk, English Language Learners, and minority students. Tuition waivers for college attendance are granted to each student.

The key to the success of these school models is a strong partnership between the independent school districts (ISDs) and higher education institutions. El Paso Community College has partnered with Canutillo ISD, Clint ISD, El Paso ISD, Fabens ISD, San Elizario ISD, Socorro ISD, Tornillo ISD, and Ysleta ISD to provide eighteen ECHS and nine P-TECHS. We are currently serving more than 4,600 students through this exciting and innovative educational experience.

El Paso Community College is committed to the success of the CCRSM mission and is adding new schools every year.

[School Websites](#) [+](#)
[School Contacts](#) [+](#)
[School Agreements](#) [+](#)

dualcredit@epcc.edu

915-831-6677